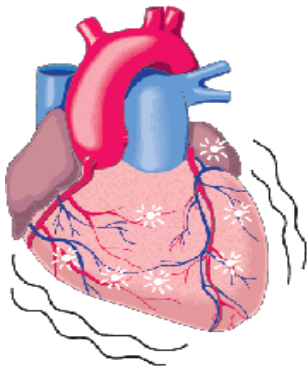


FACT SHEET: Sudden Cardiac Arrest vs. Heart Attack

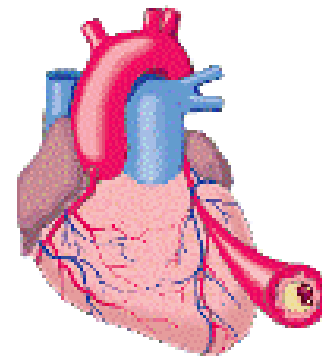
Same or Different?

SUDDEN CARDIAC ARREST



- Sudden Cardiac Arrest (SCA) is a condition that occurs when the heart stops pumping blood. Usually, this is caused by an **electrical problem** in the heart.
- Occasionally, there is a mechanical problem where there may be a normal electrical signal; in turn the heart muscle fails to pump.
- Sometimes SCA is caused by severe hemorrhage and other issues.

HEART ATTACK



- A heart attack is caused by a circulation or **plumbing problem of the heart**, when one (or more) of the arteries delivering blood to the heart is blocked. Oxygen in the blood cannot reach the heart muscle, and the heart muscle becomes damaged.
- This damage to the heart muscle can lead to disturbances of the heart's electrical system. A malfunction of the heart's electrical system may cause dangerously fast or slow heart rhythms that can cause SCA.
- Many SCAs occur in patients with coronary heart disease. If the patient suffers a heart attack, there is a higher risk for SCA.